



# The first MR with IQ

Philips Intera 1.5T With SmartExam

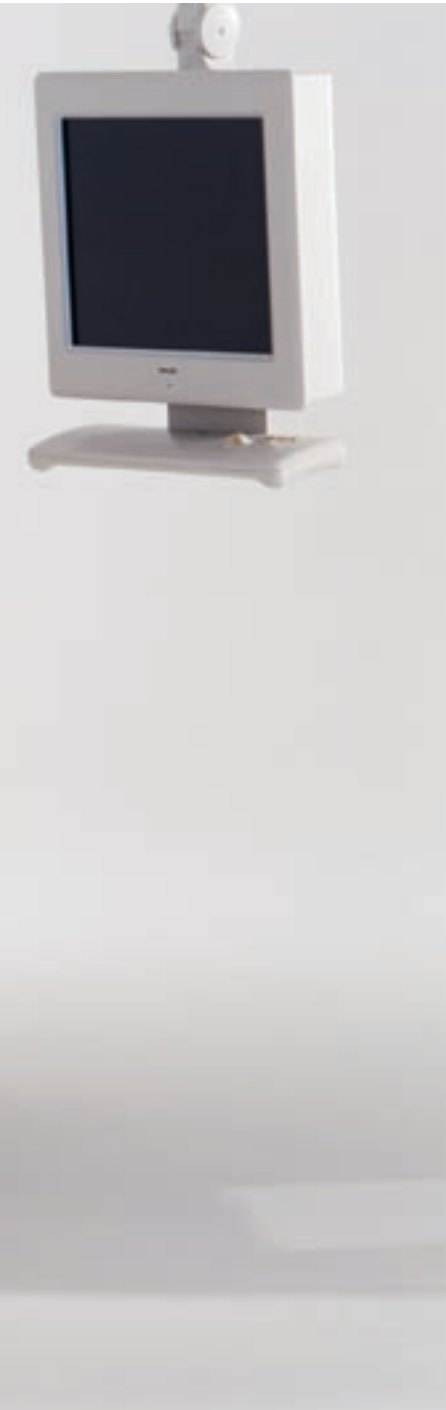
**PHILIPS**



# Smart Exam reproducibility



# – consistency, and efficiency



Philips Interia 1.5T gives you the image quality, patient comfort and range of clinical applications you need to expand your business, plus the ease of use and high throughput that will help you handle that new business. And now, Interia 1.5T features SmartExam\*. An intelligent approach to MR, SmartExam is a huge step forward in simplifying the MR exam, providing fully automated planning, scanning and processing with a single mouse click. The results?

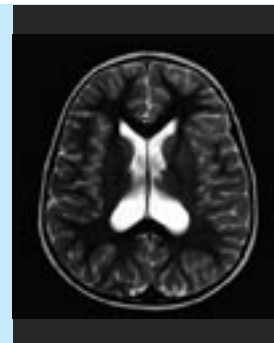
- Reproducible scan quality with any patient position, any operator, any day
- 30% increase in operator efficiency.

So, how does SmartExam work? SmartExam recognizes anatomical landmarks, remembers what the operator wants and automates the complete process, including planning, scanning and processing. Once the system has adopted your set-up, it provides absolute consistency of the clinical examination for every patient, automatically.

SmartExam benefits the patient, the operator, the physician and the administrator. Why?

- Patients will spend less time in the system
- Operators can focus on what matters most, not the technology
- Physicians get consistent results, every time
- Administrators get operational excellence

*\* SmartExam is supported for the cranial anatomy in the current release.*



SmartExam ensures consistent clinical results every time for the physician. Shown: pediatric brain imaging using SmartExam while patient's head is tilted sideways.

# Referral-boosting

Designed to save you money and boost your profitability from day one, the Intera 1.5T comes equipped with the features you need to speed throughput across the whole range of clinical applications.

ScanTools clinical imaging software provides power, speed and performance in routine clinical imaging, and includes anatomy-specific packages to enhance speed and quality in all application areas.

Additional optional software packages enable expansion into advanced MR applications like multi-station imaging (e.g. total spine imaging, or peripheral angiography), multiphase cardiac imaging and breast imaging.

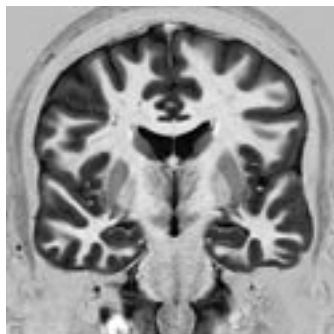
SENSE parallel imaging technology is standard in all applications, making scanning faster and dramatically increasing image resolution in standard scan times.

ExamCards offer complete clinical studies, selectable with a single touch, to shorten exam set up time and reduce training requirements.

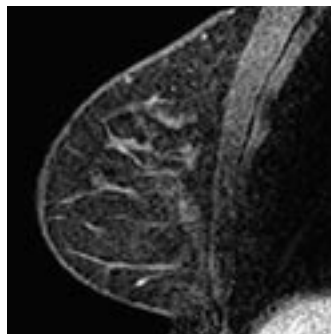
The FreeWave multi-channel platform - 4, 6 or 8 channels - speeds up imaging and improves resolution, providing exactly the right level of power for your clinical and business needs.

Intera's high-performance Integrated Body coil provides excellent uniformity with superb SNR over a full 53 cm x 53 cm field of view. In fact, Intera's SNR is 1.7x that of competitor systems\*. This enables scanning of patients without additional body coils, for faster setup, and increased patient comfort and compliance.

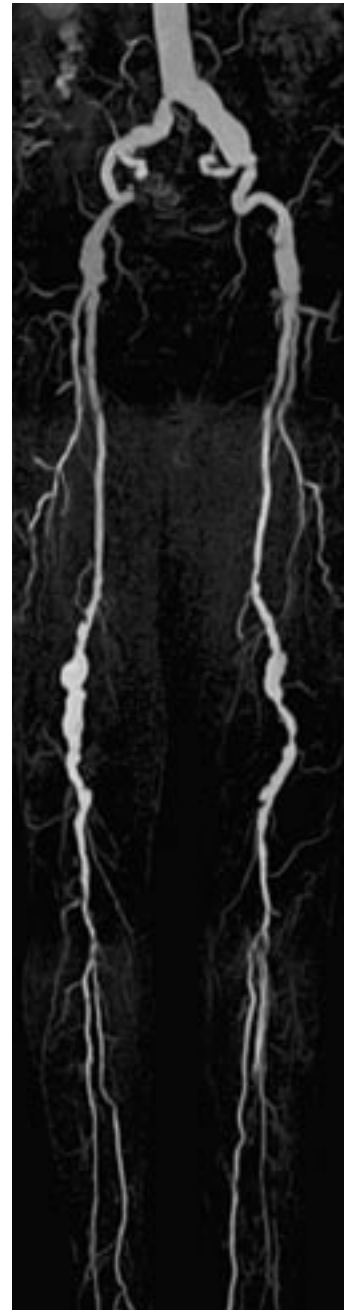
\* Medicines and Healthcare products Regulatory Agency (MHRA) Report 05047, Issue 5, August 2005, 1.5T MRI systems, Comparative report of five MRI systems.



High-resolution neuro study, T1-weighted IR sequence



BLISS high-resolution bilateral breast imaging, in any plane.

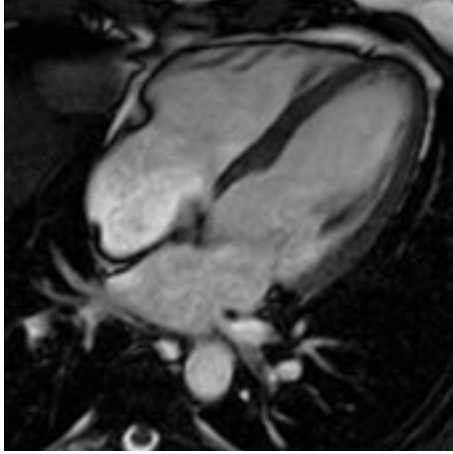


Multi-station imaging; peripheral CE-MRA. Shown: CE-MRA using SENSE, single injection, total scan time 1:30 min.

# clinical capabilities



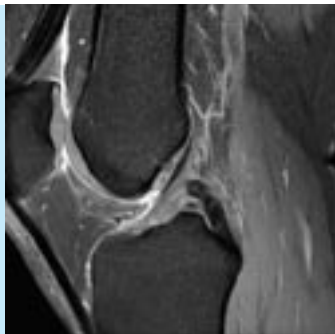
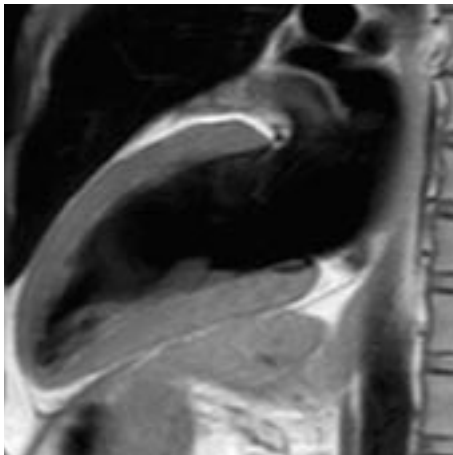
# Referral-boosting



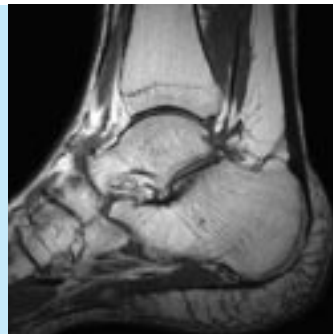
VectorCardiogram enables simple, reliable ECG triggering and gating. Shown: Balanced FFE 4-chamber view and Black Blood Imaging - long-axis view.



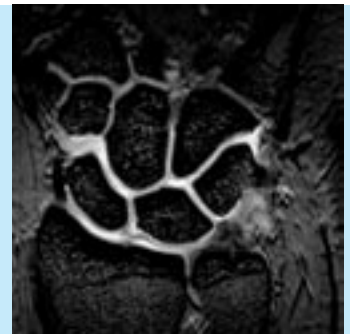
Fast, easy MR angiography. Shown: high-resolution inflow of the Circle of Willis using CHARM, high-resolution contrast-enhanced abdominal aorta study.



High-quality off-center imaging. Shown: PDWTSE using DRIVE and SPAIR (selected for light fat suppression).

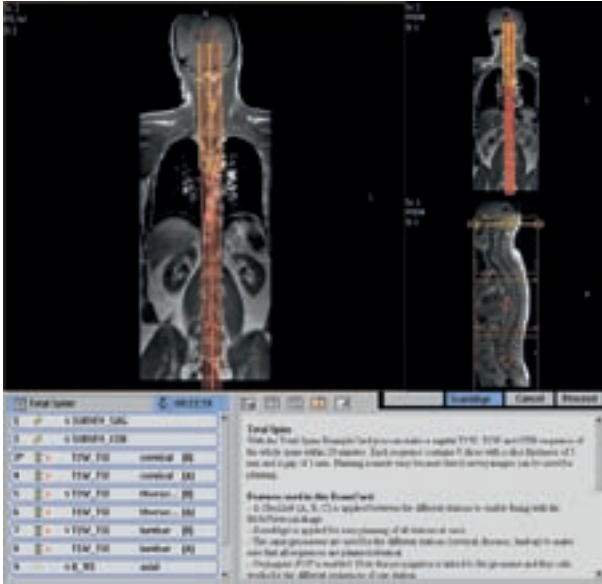


High-resolution T1-weighted TSE, voxel size  $0.15 \times 0.15 \times 3.0$  mm.

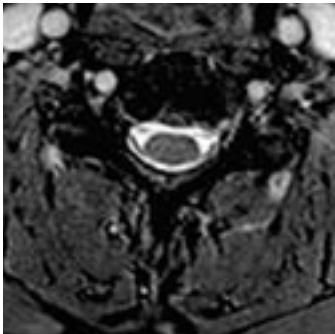


T1-weighted FFE using CLEAR for superb homogeneity.

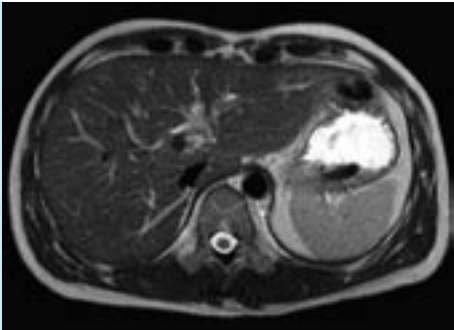
# clinical capabilities



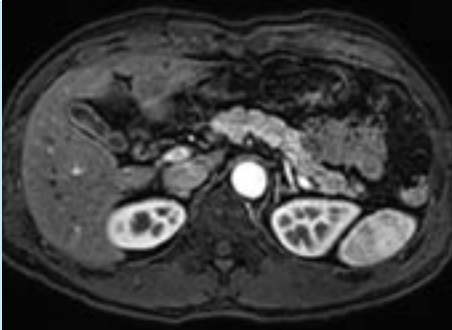
Single-scan total spine study. Shown: T1-weighted and T2-weighted TSE, two contrasts within one single table movement. The entire study is selected with one click on the Total Spine ExamCard.



Excellent contrast axial C-spine imaging using Balanced TFE, 32 slices in 1:12 min.



Free breathing abdominal imaging for increased patient comfort and compliance. Shown: T2-weighted single-shot using SENSE factor 4.



THRIVE fast high-resolution liver imaging. Shown: post-contrast arterial phase, SENSE factor 4, voxel size 1.5 x 1.5 x 1.5 mm, 130 slices in 20 sec.

# An experience to



The Intera 1.5T provides an enjoyable scanning experience for both you and your patients.

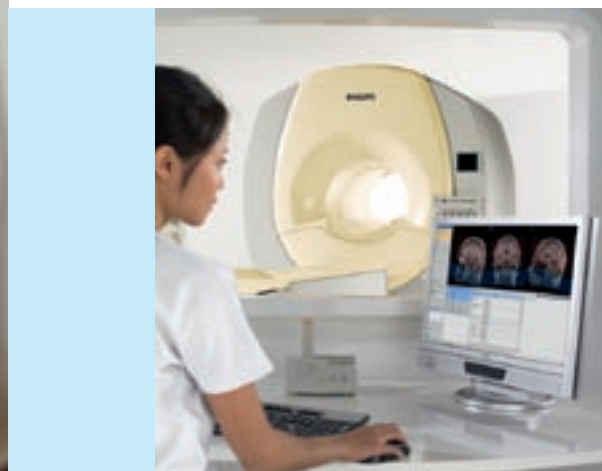
**For you:**

Thanks to SENSE and ExamCards, you'll benefit from simple, rapid operation that optimizes ease of use and patient throughput. And Intera's software delivers a host of workflow enhancing features, including:

**SmartExam:** drives the complete clinical examination automatically, resulting in shorter scans, consistent clinical results and greater efficiency.

**NetForum:** Philips online MR community, providing a host of web-enabled capabilities, including direct download of ExamCards to scanners. [www.philips.com/netforum](http://www.philips.com/netforum)

**Wide-screen console:** Intera's new 23" wide-screen console offers better viewing of results with greater data transfer capabilities.





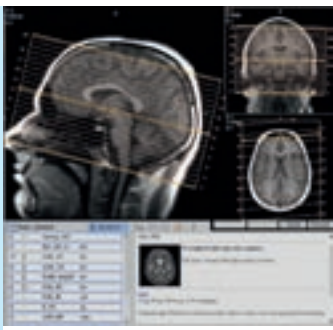
# enjoy

**For your patients:**

Intera's soft lines and soothing colors are designed for optimum patient comfort and relaxation. The wide, short bore magnet comfortably accommodates all patients and reduces anxiety.

The Philips Integrated Body Coil minimizes the need to encase patients in restrictive and uncomfortable surface coils.

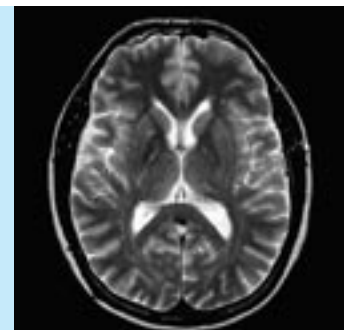
In addition, SofTone technology reduces patient-perceived acoustic noise by more than 85%, creating a friendlier exam experience.



ExamCards – complete clinical studies, selectable at a single touch. Shown: Brain ExamCard.



ExamCards are downloadable direct to scanners from Philips NetForum online MR community.



SmartExam provides consistent results, every time. Shown: high-resolution T2-weighted TSE.

# Tailored to your clinical



# and business needs

Intera 1.5T offers flexibility that makes it simple to choose exactly the right level of clinical power to match both your clinical and business requirements.

### Flexibility in gradients

Intera's new RF architecture combined with a choice of powerful gradients delivers optimum peak and slew rates with high linearity over a full 53 cm FOV - crucial for multi-station and off-center imaging. Intera's gradients combine with SENSE for dramatic improvements in resolution and speed - essential for procedures like vascular, neuro and body imaging.

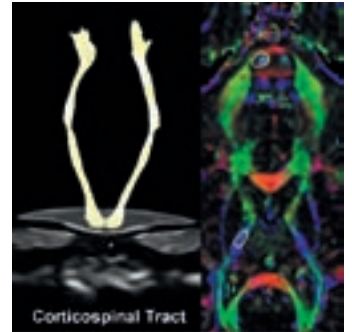
### Flexibility in clinical imaging software

Choose between ScanTools Plus and ScanTools Pro software for the right level of imaging, viewing, processing and post-processing techniques for your practice. A range of optional clinical imaging software, coils and accessories is available, enabling you to offer specialist services in advanced applications areas like neuro fiber tracking and cardiac imaging.

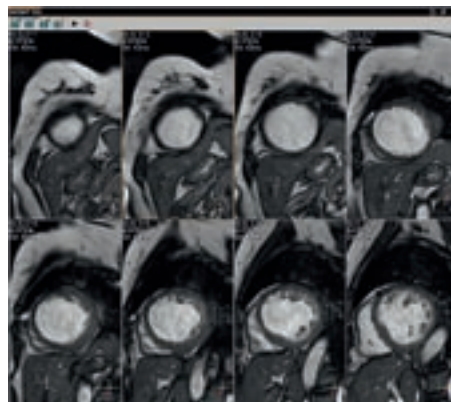
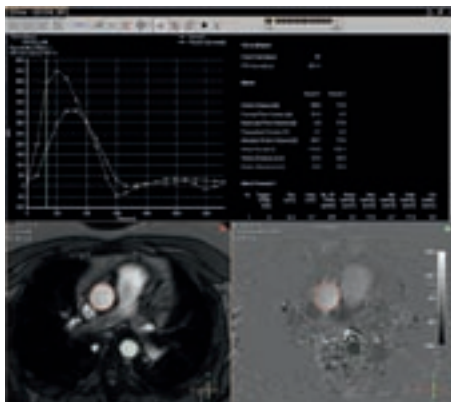
### Support that keeps you in touch with tomorrow

Throughout its operating life, Philips proven, robust, secure upgrade path ensures that your Intera 1.5T will have the very latest functionality, speed and reliability. Philips' product development philosophy means that MR breakthroughs are migrated quickly across all Philips MR systems, bringing you immediate clinical benefits. The availability of ongoing upgrades extends the useful life of your MR system, as well as continually maximizing the return on your investment. And Philips service and support programs keep your system operating at peak efficiency.

The result? The perfect Intera for your business, from day one and way into the future.



FiberTracking Specialist package enables easy viewing of white matter tracts, with an intuitive user interface and easy navigation (Specialist packages available as optional clinical imaging software).



Enhance cardiac MR functionality by adding Q-FLOW Analysis (left) and multi-slice, multi-phase cardiac scanning (right). Available with ScanTools Pro software.

**Philips Healthcare is part of  
Royal Philips Electronics**

**Interested?**

Would you like to know more about our imaginative products? Please do not hesitate to contact us. We would be glad to hear from you.

**How to reach us**

[www.philips.com/healthcare](http://www.philips.com/healthcare)

[healthcare@philips.com](mailto:healthcare@philips.com)

fax: +31 40 27 64 887

**Asia**

+852 2821 5888

**Europe, Middle East, Africa**

+49 7031 463 2254

**Latin America**

+55 11 2125 0744

**North America**

+1 425 487 7000

800 285 5585 (toll free, US only)

**Philips Healthcare**

Global Information Center

P.O. Box 1286

5602 BG Eindhoven

The Netherlands

Philips gratefully acknowledges the contribution of clinical images from the following institutions:

Erasme Hospital, Belgium

Maastricht University Hospital, the Netherlands



© 2009 Koninklijke Philips Electronics N.V.  
All rights are reserved.

Philips Healthcare reserves the right to make changes in specifications and/or to discontinue any product at any time without notice or obligation and will not be liable for any consequences resulting from the use of this publication.

Printed in The Netherlands.  
4522 962 07381/781 \* FEB 09